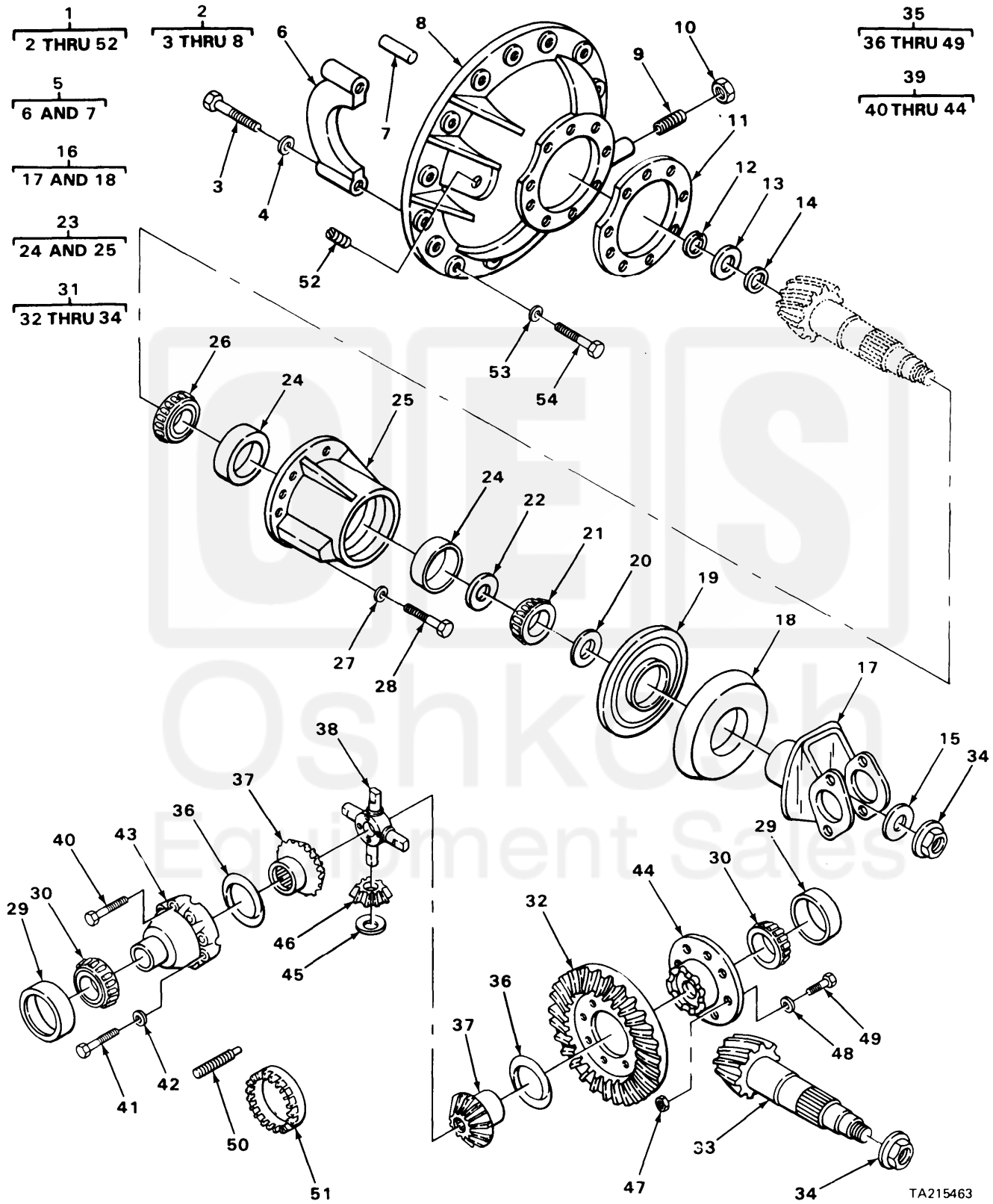


SECTION II

TM9-2320-273-24P



TA215463

FIGURE 89. FRONT DIFFERENTIAL CARRIER ASSEMBLY (MODELS M916, M917, M918, M919 AND M920).

Current part is item (30) on diagram. Available at [www.oshkoshequipment.com](http://www.oshkoshequipment.com)

SECTION II (1)	SMR (2)	FSCM (3)	TM9-2320-273-24P (4)	(5)	(6)
ITEM NO	CODE		PART NUMBER	DESCRIPTION AND USABLE ON CODE (UOC)	QTY
GROUP:1002 DIFFERENTIAL					
FIGURE 89. FRONT DIFFERENTIAL CARREIR ASSEMBLY (MODEL M916, M917, M918, M919 AND M920).					
1	PAFHH	78500	E21-3200-H-606-6 .17	DIFFERENTIAL, CARRIER UOC:U22,U23,U24,U25,U26	1
2	PAHHH	78500	A2-3200H606	.CARRIER,DIFFERENTIA UOC:U22,U23,U24,U25,U26	1
3	PAHZZ	78500	10X546	..SCREW,MACHINE UOC:U22,U23,U24,U25,U26	4
4	PAHZZ	78500	1229T1554	..WASHER,FLAT UOC:U22,U23,U24,U25,U26	4
5	PAHHH	78500	A-3212-U-203	..CAP,PILLOW BLOCK UOC:U22,U23,U24,U25,U26	2
6	XAHZZ	78500	3212-U-203	...CAP,BEARING UOC:U22,U23,U24,U25,U26	1
7	PAHZZ	78500	1246D342	...PIN,SHOULDER,HEADLE UOC:U22,U23,U24,U25,U26	2
8	XAHZZ	78500	3200-H-606	..CARRIER UOC:U22,U23,U24,U25,U26	1
9	PAHZZ	78500	15X1025	.SETSCREW UOC:U22,U23,U24,U25,U26	1
10	PAHZZ	78500	13X41	.NUT,PLAIN,HEXAGON UOC:U22,U23,U24,U25,U26	1
11	PAOZZ	78500	2203L1260	.SHIM 0.003 IN UOC:U22,U23,U24,U25,U26	V
11	PAHZZ	78500	2203A469	.SHIM 0.005 IN UOC:U22,U23,U24,U25,U26	V
11	PAHZZ	78500	2203B470	.SHIM 0.010 IN UOC:U22,U23,U24,U25,U26	V
12	PAHZZ	78500	1229U1113	.RING,RETAINING UOC:U22,U23,U24,U25,U26	1
13	PAHZZ	78500	1199Z1430	.RETAINER UOC:U22,U23,U24,U25,U26	1
14	PAHZZ	78500	1228X154	.BEARING,ROLLER,CYLI UOC:U22,U23,U24,U25,U26	1
15	PBFZZ	78500	1229T1736	.WASHER,FLAT UOC:U22,U23,U24,U25,U26	1
16	PAFFF	78500	A-3280-V-6756	.YOKE,UNIVERSAL JOIN UOC:U22,U23,U24,U25,U26	1
17	XAFZZ	78500	3280-V-6756	..YOKE,DRIVE UOC:U22,U23,U24,U25,U26	1
18	PAFZZ	78500	2847V308	.DEFLECTOR,DIRT UOC:U22,U23,U24,U25,U26	1
19	PAFZZ	78500	A1-1805-S-149	.SEAL,SPECIAL UOC:U22,U23,U24,U25,U26	1
20	PAFZZ	79780	1229E1071	.WASHER,SPECIAL UOCLU22,U23,U24,U25,U26	1
21	PAHZZ	60038	H715334	.CONE AND ROLLERS,TA UOC:U22,U23,U24,U25,U26	1

Current part is item (30) on diagram. Available at [www.oshkoshequipment.com](http://www.oshkoshequipment.com)

Current part is item (30) on diagram. Available at [www.oshkoshequipment.com](http://www.oshkoshequipment.com)

SECTION II (1) ITEM NO	(2) SMR CODE	(3) FSCM	TM9-2320-273-24P (4) PART NUMBER	(5) DESCRIPTION AND USABLE ON CODE (UOC)	(6) QTY
22	PAHZZ	78500	2203L1078	. SPACER, BEARING 0.248 IN UOC: U22, U23, U24, U25, U26	V
22	PAHZZ	78500	2203M1079	. SPACER 0.249 IN UOC: U22, U23, U24, U25, U26	V
22	PAOZZ	78500	2203N1080	. SPACER, BEARING 0.250 IN UOC: U22, U23, U24, U25, U26	V
22	PAHZZ	78500	2203P1082	. BEARING, WASHER, THRU 0.251 IN UOC: U22, U23, U24, U25, U26	V
22	PAHZZ	78500	2203Q1083	. SPACER, RING 0.252 IN UOC: U22, U23, U24, U25, U26	V
22	PAOZZ	78500	2203R1084	. SPACER, RING 0.253 IN UOC: U22, U23, U24, U25, U26	V
22	PAHZZ	90407	3982P11	. SPACER, FORWARD BEAR 0.259 IN UOC: U22, U23, U24, U25, U26	V
22	PAHZZ	78500	2203T1086	. SPACER, RING 0.265 IN UOC: U22, U23, U24, U25, U26	V
22	PAHZZ	78500	2203U1087	. GASKET 0.271 IN UOC: U22, U23, U24, U25, U26	V
22	PAFZZ	78500	2203V1088	. SPACER, FORWARD BEAR 0.277 IN UOC: U22, U23, U24, U25, U26	V
22	PAHZZ	78500	2203W1089	. BEARING, WASHER, THRU 0.283 IN UOC: U22, U23, U24, U25, U26	V
23	PBHHH	7850	A-3226-T-878	. CAGE ASSEMBLY PINIO UOC: U22, U23, U24, U25, U26	1
24	PAHZZ	78500	H715311	. . CUP, TAPERED ROLLER UOC: U22, U23, U24, U25, U26	2
25	XAHZZ	78500	3226-T-878	. . CAGE, PINION UOC: U22, U23, U24, U25, U26	1
26	PAHZZ	60038	H715343	. CONE AND ROLLERS, T A UOC: U22, U23, U24, U25, U26	1
27	PAHZZ	38597	50-4-18-17-7	. WASHER, FLAT UOC: U22, U23, U24, U25, U26	8
28	PAHZZ	78500	S2813-1	. SCREW, CAP, HEXAGON UOC: U22, U23, U24, U25, U26	8
29	PAHZZ	30076	30295	. CUP, TAPERED ROLLER LH AND RH UOC: U22, U23, U24, U25, U26	2
30	PAHZZ	30076	30296	. CONE AND ROLLER, TA UOC: U22, U23, U24, U25, U26	2
31	PAFZZ	7850	A-35156-9.6.17	. PINION GEAR ASSY UOC: U22, U23, U24, U25, U26	1
32	XAHZZ	78500	35156	. . GEAR, BEVEL UOC: U22, U23, U24, U25, U26	1
33	XAHZZ	78500	38249	. . PINION, BEVEL UOC: U22, U23, U24, U25, U26	1
34	PBFZZ	78500	1227-J-947	. . NUT, SELF-LOCKING UOC: U22, U23, U24, U25, U26	2
35	PAFHH	78500	A1-3235-N-1106	. DIFFERENTIAL ASSY UOC: U22, U23, U24, U25, U26	1
36	PAHZZ	78500	1229E993	. . BEARING, WASHER, THRU UOC: U22, U23, U24, U25, U26	2
37	PAHZZ	78500	2234-F-344	. . GEAR, SIDE UOC: U22, U23, U24, U25, U26	2
38	PAHZZ	78500	3278A79	. . SPIDER, DIFFERENTIAL	1

Current part is item (30) on diagram. Available at [www.oshkoshequipment.com](http://www.oshkoshequipment.com)

Current part is item (30) on diagram. Available at [www.oshkoshequipment.com](http://www.oshkoshequipment.com)

SECTION II (1) ITEM NO	(2) SMR CODE	(3) FSCM	TM9-2320-273-24P (4) PART NUMBER	(5) DESCRIPTION AND USABLE ON CODE (UOC)	(6) QTY
39	PAHHH	78500	A32-3235-N-1106	UOC: C22, U23, U24, U25, U26 ..CASE ASSEMBLY, DIFF	1
40	PAHZZ	78500	15X1514	UOC: U22, U23, U24, U25, U26 ...SCREW, CAP, HEXAGON	4
41	PAHZZ	78500	15X1515	UOC: U22, U23, U24, U25, U26 ...SCREW, CAP, HEXAGON	8
42	PAHZZ	78500	1229U1503	UOC: U22, U23, U24, U25, U26 ...WASHER, FLAT	12
43	XAHZZ	78500	3235-G-839	UOC: U22, U23, U24, U25, U26 ...CASE, DIFFERENTIAL PLAIN HALF	1
44	XAHZZ	78500	3235-N-1106	UOC: U22, U23, U24, U25, U26 ...CASE, DIFFERENTIAL FLANGE HALF	1
45	PAHZZ	78500	1229-D-992	UOC: U22, U23, U24, U25, U26 ..WASHER, SPRING TENSI	4
46	PAHZZ	78500	2233U99	UOC: U22, U23, U24, U25, U26 ..GEAR, BEVEL	4
47	PAHZZ	78500	NL-110-1	UOC: U22, U23, U24, U25, U26 ..NUT, HEX	12
48	PAHZZ	78500	1229U1503	UOC: U22, U23, U24, U25, U26 ..WASHER, FLAT DRIVE, SPECIAL	12
49	PAHZZ	78500	15X-1474	UOC: U22, U23, U24, U25, U26 ..BOLT	12
50	PAHZZ	78500	1199M2457	UOC: U22, U23, U24, U25, U26 ..PIN, COTTER	2
51	PAHZZ	78500	2214X50	UOC: U22, U23, U24, U25, U26 ..RING, ADJUSTING LH AND RH	2
52	PAOZZ	81348	WW-P-471ACBBLLE	UOC: U22, U23, U24, U25, U26 ..PLUG, PIPE	1
53	PAFZZ	78500	1229U1503	UOC: U22, U23, U24, U25, U26 WASHER, FLAT	14
54	PAFZZ	78500	S21013	UOC: U22, U23, U24, U25, U26 SCREW, CAP, HEXAGON	10
54	PAFZZ	78500	S21019	UOC: U22, U23, U24, U25, U26 SCREW, CAP, HEXAGON	4

END OF FIGURE



Current part is item (30) on diagram. Available at [www.oshkoshequipment.com](http://www.oshkoshequipment.com)